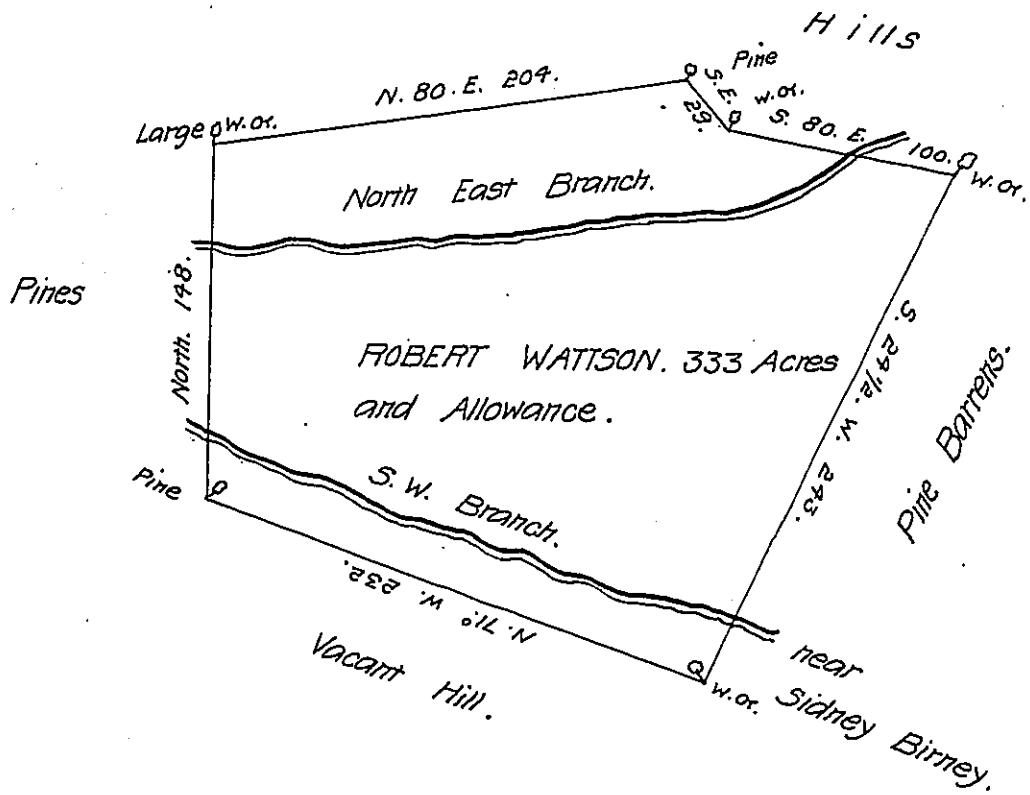


FORM NO 1.

e-157-32
Pine



A Draught of a Tract of Land called Spring Field situate obl. and nearly adjoining Sidney Birney's Land and running cross from the South West Branch of Little Aughwick to the North East B. obl. half a Mile below the Burnt Cabbins in Dublin Township in the County of Bedford Containing three hundred & thirty three Acres an obl. usual Allowance of six Per Cent for Roads &c. Surveyed the 8th Day obl. May 1773 & the 21st Day of October 1774 for Robert Watson in p(obl.) of an Order N^o 4210. Dated the 24th Day of July 1767 by

To John Luters Esq^r }
 Surveyor General &c. } Thomas Smith (obl.)

IN TESTIMONY that the above is a copy of the original remaining on file in the Department of Internal Affairs of Pennsylvania, made conformably to an Act of Assembly approved the 16th day of February, 1833, I have hereunto set my Hand and caused the Seal of said Department to be affixed at Harrisburg, this first day of July 1908.

Henry Horner
 Secretary of Internal Affairs.